



**QUEEN'S  
UNIVERSITY  
BELFAST**

**Framing Ageing Symposium:**

**One-day workshop for early career scholars**

**Queen's University Belfast, Wednesday 14 December 2022**

**Venue: Room 0G/074, Lanyon Building, Queen's University Belfast**

[Framing Ageing](https://framingageing.ucd.ie/) [https://framingageing.ucd.ie/] is an international clinical, cultural and social dialogue which facilitates methodological exchange between geriatricians, gerontologists, humanities researchers, social scientists, and practitioners, who can benefit from transdisciplinary collaboration. Keynote speaker, [Hannah Zeilig, University of the Arts, London](#) will open the symposium.

- 8.30am - 9.30am**      **Registration and breakfast with Hannah Zeilig and other delegates**  
Room 0G/074, Lanyon Building
- 9.30am - 10.40am**    **Welcome from Gemma Carney, Queen's University Belfast**  
**Keynote Address: The pleasure of finding things out, Hannah Zeilig,**  
**University of Arts, London**  
Room 0G/074, Lanyon Building
- 10.40am - 11am**      **Coffee and biscuits**  
Room 0G/074, Lanyon Building
- 11am -12.45pm**      **Session 1 (3 parallel sessions)**  
Room 0G/074 in Lanyon Building and rooms TR1  
and TR5 in the Graduate School
- 12.45pm - 1.30pm**    **Lunch**  
Lobby of Room 0G/074, Lanyon Building
- 1.30pm - 3pm**        **Session 2 (3 parallel sessions)**  
Room 0G/074 in Lanyon Building and rooms TR1  
and TR5 in the Graduate School
- 3pm - 3.15pm**        **Coffee break**  
Lobby of Room 0G/074, Lanyon Building
- 3.15pm - 4.30pm**    **Roundtable discussion**  
**What can we learn from the ideas of others?**  
**Chaired by Gemma Carney. Panellists: Des O'Neill, Leonie Hannan**  
**and Tess Maginnis**  
Room 0G/074, Lanyon Building

## **Parallel Sessions 1: 11am to 12.45pm**

Session 1a **Art, Music and Material Culture** (Room 0G/074, Lanyon Building)

**Chair: Sophie Cooper; Discussant: Leonie Hannan**

1. Angel Leira Pernas, Queen's University Belfast, *The Meaning of the Present in Old Age – An Alternative to the Discourse of Decline*
2. Olivia Luijnenburg, King's College London, *Gallery of Spiritualities – Reflecting on Spirituality in the Residential Care for Older People*
3. Sophie Lee, Royal Irish Academy of Music, *Ageing with Dementia – The Role of Music*
4. Isaac Gibson, Sonic Arts Research Centre, Queen's University Belfast *"Memory Boxes" of People Receiving Palliative Care*

Session 1b **Perspectives on Dementia** (Room TR1, Graduate School)

**Chair: Gemma Carney; Discussant: Jiatong Ling**

1. Calum Marr, Queen's University Belfast, *The RESIST Study: Do TNF Inhibitors Protect Against Cognitive Decline in Rheumatoid Arthritis Patients with Mild Cognitive Impairment?*
2. Niamh Kelly, Technological University of the Shannon Midlands, *Physical Activity Preferences of People Living with Dementia and Their Care Partners*
3. Sophie Glover, Queen's University Belfast, *Identification of the Causal Pathways Between Urban Green Space and Cognitive Health: A Systematic Review*
4. Monica Leverton, King's College, London, *Developing the Role of Dementia Champions in The Homecare Sector – The 'DemChamp' Study*

Session 1c **Ageing in the Community** (Room TR5, Graduate School)

**Chair: Elizabeth Martin; Discussant: Des O'Neill**

1. Leeanne O'Hara, Queen's University Belfast, *The Harmonised Cognitive Assessment Protocol (HCAP)*
2. Catrin Noone, Durham University, *Loneliness in the Community or Community Loneliness? Lived Experiences of Community-Dwelling Older Adults*
3. Lauren Fothergill, Lancaster University, *Exploring How Proactive Telecare Can Support Independent Living in Older Adults: A Qualitative Study*
4. Mbulayi Shingirai, University of Fort Hare, South Africa, *Gestating Sustainable Geriatric Social Protection System in Zimbabwe: Issues, Challenges and Prospects*

## **Parallel Sessions 2: 1.30pm to 3pm**

Session 2a **Comparative Ageing** (Room 0G/074, Lanyon Building)

**Chair: Des O'Neill; Discussant: Leeanne O'Hara**

1. Jiatong Ling, Queen's University Belfast, *Grandparent Involvement in Childcare: A Qualitative Study in Chinese Families*
2. Kiki Ekiawan Lamatungga, Technical University in Zvolen, *Effect of the Restorative Natural Environment on HRV, HR, Stress, and Cognitive Function in Slovak Seniors*
3. Ione Avila-Palencia, Queen's University Belfast, *Mapping the Complex Systems that Connects the Urban Environment to Cognitive Decline in Older Adults: A Group Model Building Study*

Session 2b **Music, Film, Theatre and Literature** (Room TR1, Graduate School)

**Chair: Leonie Hannan; Discussant: Angel Leira Pernas**

1. Neasa Fitzpatrick, Mercy University Hospital Cork, Ireland, *Spotlighting the Success of Older Female Directors: A Demonstration of the Creativity and Resilience of Old Age in the Face of Cultural Barriers*
2. Réka Polonyi and Kate Maguire-Rosier, University of Manchester, *'What's Theatre Got to Do with It?': The Care Aesthetics Research Exploration (CARE) Project and Its Interdisciplinary Challenges*
3. Xu, Yaqian, Warwick University, *Ageing Masculinity in American Novels since the 1970s*

Session 2c **Public Policy in Ageing Societies** (Room TR5, Graduate School)

**Chair: Isaac Gibson; Discussant: Gemma Carney**

1. Kaitlyn Juryung Cho, University of Oxford, *The Global Paradigm Shift towards Active Ageing and Beyond: An Analysis of Policy Documents by International Organizations*
2. Luis Soares, University of Edinburgh, *Reframing Social Sciences Epistemologies and Methods Using a Framework to Dissolve "Wicked Problems"*
3. Chloe Waterman, King's College London, *A Socio-Legal Investigation into Making Plans for Dying, Perspectives of People with Dementia*

## BIOGRAPHIES

### Keynote speaker



nals.

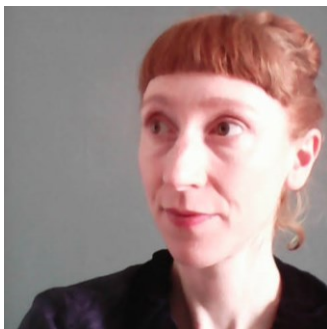
**Hannah Zeilig** is a leading arts and dementia researcher based at University of Arts, London. Hannah has explored and written about the role and value of the arts for people with dementia. Her work is characterised by a trans-disciplinary approach and she collaborates with a wide range of colleagues from clinicians to scientists and artists. Hannah has collaborated with a range of colleagues through her work at Oxford Institute on Ageing, The King's Fund and the Institute of Gerontology, King's College London. Her work has been published in *The Gerontologist*, *Dementia* and other leading journals.

### Meet the organising committee

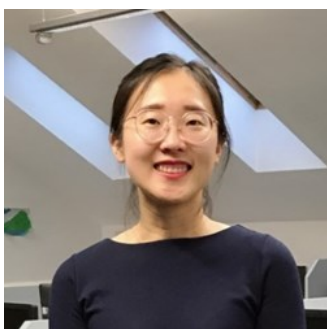


which was nominated for the Richard Kalish prize in 2021.

**Gemma Carney** is a member of the [Framing Ageing transdisciplinary research network](#). She is a social and cultural gerontologist on the [ARK Ageing programme](#) based at the School of Social Sciences, Education and Social Work at Queen's University Belfast (QUB). Gemma began her career in gerontology working as policy officer for a group of retired trade unionists who were challenging discrimination in their old age. She has been researching ageism and ageing ever since. Along with Paul Nash, she is author of [Critical Questions for Ageing Societies](#) (Policy Press, 2020), an introduction to ageing



**Leonie Hannan** is founder of the [Science and Culture Research group at QUB](#). She is a material culture specialist and former museum curator who now leads the [Centre for Eighteenth-Century Studies at Queen's](#). Her interests in ageing have been developed through her work on early modern letter-writing; [material culture](#) history and through her ongoing collaboration with cultural gerontologist, Dr Gemma Carney.



**Jiatong Ling** is a PhD student at School of Social Sciences, Education and Social Work at Queen's University Belfast. Her research focuses on childcare arrangement and intergenerational relationships between grandparents and parents in Chinese families where grandparents are involved in childcare. Qualitative research methods were utilised to collect and analyse data. She is in the writing-up stage currently and expected to graduate in summer 2023.



**Alice Neeson** is impact acceleration officer at Queen’s University Belfast. She coordinates the ESRC impact acceleration account which funded this symposium. She has a PhD in social anthropology and a background in community-led research, social tech and social innovation. She was part of a team that won the Google Impact Challenge Award in 2017 for a support app for refugees, and managed a People’s Accelerator and three-nation Youth Accelerator for community-led innovation (2016-2019).



**Des O’Neill** is founding member of the [Framing Ageing network](https://framingageing.ucd.ie/) (<https://framingageing.ucd.ie/>). He is Professor of Medical Gerontology at Trinity College Dublin. His research centres on gerontology and the neurosciences, with a strong emphasis on the humanities. He is a co-founder and past-president of the European Union Geriatric Medicine Society ([www.eugms.org](http://www.eugms.org)), and currently the Chair of the Humanities and Arts Committee of the Gerontological Society of America and co-chair of Medical and Health Humanities at TCD. He was awarded the All-Ireland Inspirational Life Award in 2010 for advancing the cause of older people in Ireland.



**Ángel Leira Pernas** is member of the [Ark Ageing Programme](#) and is currently completing his PhD at the School of Social Sciences, Education and Social Work at Queen’s University Belfast. His thesis “Material Memoirs on the Journey of Life” is a multidisciplinary project that aims to find alternative narratives of ageing in older people’s life narratives through the use of grounded theory research methods and object-led interviews, and also to describe how older people’s identities and routines are shaped by their relationships with their personal possessions.

## HOW TO FIND THE ROOMS

The Welcome address and two parallel sessions will take place in the room 0G/074 of the Lanyon Building, and two parallel sessions will take place in rooms TR1 and TR5 of The Graduate School. Maps of the campus will also be available during the registration.

A map of the campus can be downloaded in the following link:  
<https://www.qub.ac.uk/home/Filestore/Fileupload,662793,en.pdf>



